

● ● ● ● ● ● ● ● ● ● **HT-LQC Series**
 ● ● ● ● ● ● ● ● ● ● **"Twister"**
 ● ● ● ● ● ● ● ● ● ● **Locking Quick Connect**



Pressure Locking
 Patented, other patents pending

Description

The Twister, "LQC" is the next generation of quick couplings designed as an option to replace conventional "cam & groove" couplings that are used in critical service applications. The LQC is engineered to be used in conjunction with hoses and loading arms.



The Twister

Features

- Rapid engagement, 1/4 twist on/off.
- Ultra low pressure or vacuum locking.
- Built in pressure locking safety locking feature.
- Coupling locks during uncoupling should residual or line pressure be present.
- Smooth bore, ideal for pigging applications.
- Commercially available "O" ring seals.
- Optional "snap in" customized handles for those "tight spots".
- Built to B31.3 specifications to ISO 9001-2000 Quality Standards.
- Pressure ratings equivalent to ANSI 150/300.
- Available in 3/4", 1", 2", 3", 4" and 6" nominal sizes.
- Materials: SS 316 and Cold Temperature Carbon Steel and Aluminum 6061 T6.
- Surpasses Occupational Health & Safety Section 188 (October 2003)

OPW[®]

Engineered Systems

PART OF OPW FLUID TRANSFER GROUP
A DOWD COMPANY

- PIPE, TUBING, AND HOSE COUPLING SEALING SOLUTIONS
- PROCESS PIGGING
- PRODUCT RECOVERY TECHNOLOGIES

HILTAP
FITTINGS LTD.



HT-LQC Series

"Twister"

Locking Quick Connect



The Twister

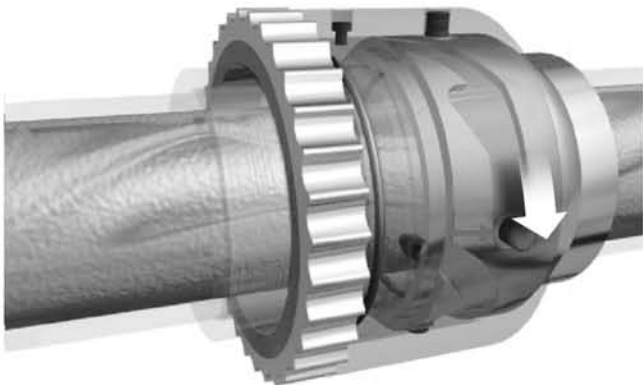
1/4 Turn
Rapid Engagement



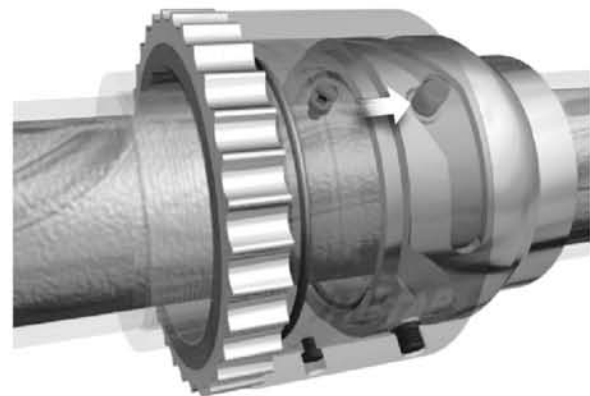
Easy
Alignment



Pressure or Vacuum
Energizes Sealing & Locking



Pressure Locking
The Ultimate Safety Feature



Safe, Environmentally friendly, Quality products.
Patented, Patents pending.

1-800-661-6150 Toll-free
(403) 250-2986 Canada (403) 291-3592 Fax

Printed in USA 3/09 • www.hiltap.com

© Copyright 2009, OPW Engineered Systems • www.opw-es.com

Distributed by:

For Sales & Information Contact

Pigging Solutions, LLC

Phone: (630) 310-4041

www.PiggingSolutions.com